



SAGE PFW

SYSTEM ARCHITECTURE

SCALABLE ARCHITECTURE

- Powerful two-tier (client and server) and optional three-tier (client, server, and process application server).
- Developed using industry standard tools, including Visual Basic.
- Streamlined integration with Microsoft Windows, which enables inquiry through Microsoft Excel, Microsoft Access, and other applications.
- Extensive auditing capabilities.
- Administrative wizards facilitate system setup and maintenance.
- The Pervasive.SQL database provides fast, reliable processing.

CUSTOMIZATION

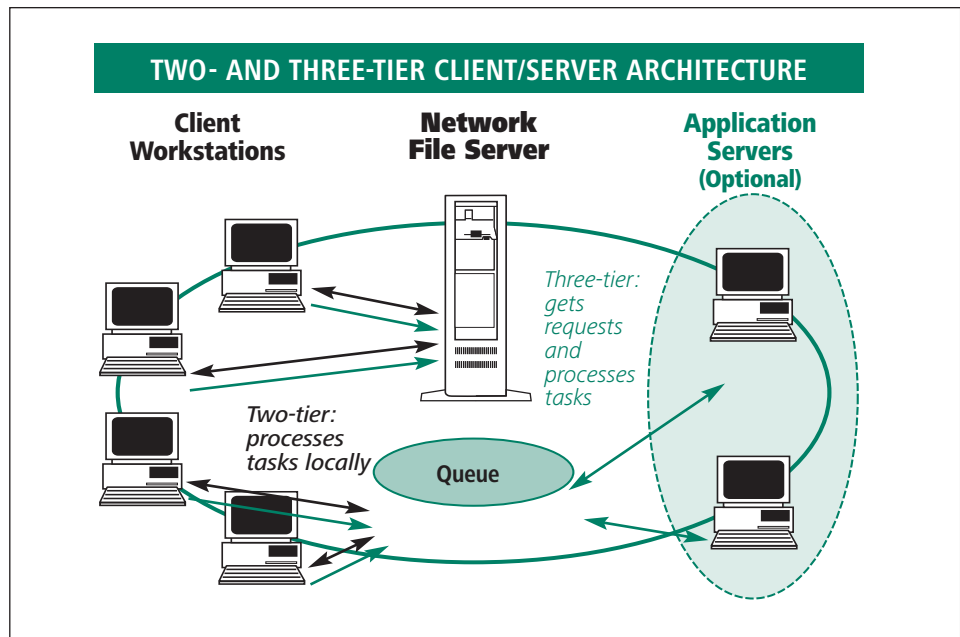
- Tailor data entry templates by user group, company, and more.
- Create your own menus, menu titles, and items to match your work processes.
- Integrate custom written applications using ODBC drivers.
- Sage PFW Customization Workbench module for language translations and more extensive modifications.

SECURITY

- Control user access with the flexibility and reliability of user groups and user profiles.
- Ensure an accurate audit trail with time and date stamps for all Sage PFW activity.
- Enhance security with Pervasive AuditMaster, the virtual watchdog, and rely on around-the-clock surveillance to keep your data virtually bulletproof.

INSIGHTFUL REPORTS

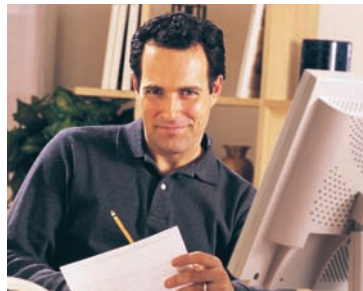
- Create non-financial custom reports and forms using Crystal Reports®.
- Schedule reports to run during off-peak hours.
- Create multi-tiered financial reports with Microsoft FRx.



At the foundation of your business you want a system that you can rely on for maximum performance, ease of use, and the flexibility to continually adapt to your company's evolving needs. With its optional scalability to three-tier client/server architecture, Sage PFW ERP provides one of the most powerful, versatile solutions on the market. Typically only found in very high-end systems, the three-tier architecture enables a quantum leap in productivity and efficiency. Transaction entry and data maintenance are performed at the client workstations with direct access to the database files. Time-intensive tasks such as posts, utilities, listings, and reports are optionally sent to the job queue where they are retrieved, completed, and returned by the application server. Users can simultaneously run multiple reports and postings, all while working on their next task. By saving time, eliminating server bottlenecks and substantially enhancing performance, the architecture for Sage PFW promises to raise productivity and ultimately boost your bottom line.

Extensive customization capabilities and cost-effective scalability make Sage PFW the ideal choice for companies of all sizes. Easy-to-employ security features safeguard business intelligence, freeing you to focus on the business at hand. Pervasive's AuditMaster application will safeguard the integrity and security of your data by keeping a comprehensive database audit trail. AuditMaster innocuously logs every change that is made—24 hours a day, seven days a week. With AuditMaster you define the issues that are critical to the security of your data! You are immediately alerted to activities that impact the integrity of your data.

From developing innovative products that anticipate our customers' changing needs to providing award-winning customer support, we are dedicated to surpassing expectations in all aspects of our business. Rest assured our software is supported by a nationwide network of specialists who are your resource for implementation, training, service, and support. For more information about Sage PFW software and to reach a higher level of performance and profitability, please contact your local business partners or call us directly toll free at 1-888-473-5135. You may also visit our Web site at: www.sagesoftware.com or e-mail us at: sagepfwinfo@sage.com



Sage PFW

System Architecture

"The greatest thing about Sage PFW is its reliability. Sage PFW gives us the data integrity we need for total confidence in our numbers."

Mickey Salas
Senior Accounting Specialist
Washington Casualty Company

FEATURES

Scalable Architecture

The unique three-tier or two-tier client server architecture of Sage PFW software uses your Network File Server to contain its programs and data tables. Optional Process Application Servers (PAS) execute the processor-intensive work of postings, listings, reports, and database utilities. Client workstations are liberated from time-consuming processing for more productive activities. The system streamlines network traffic, easily scales to accommodate large numbers of users/data and significantly improves system performance. Written in Microsoft Visual Basic, Sage PFW software is specifically engineered to help you capitalize on the robust features of Microsoft Windows. Pervasive.SQL, the next generation Btrieve database, provides both transactional database access to work with records and a relational database for queries and reports. Fast, reliable, and scalable—it's everything you need your system to be and more.

Customization

Sage PFW software can be easily modified to adapt to the way you work. For Example, the Business Desktop gives each user the ability to customize the menu structure to complement their unique workflow. With a flexible TreeView design, similar to Microsoft Outlook and Explorer, you can easily create and rename tasks as well as drag and drop tasks from one folder to another. You can also add spreadsheets, documents, links to additional programs, and URLs directly to your Sage PFW Desktop. In addition, the ability to customize data entry screens enables you to tailor screens to unique specifications for different user groups, companies, global locations, and more. You can even create your own field-level help to facilitate your user's efficiency. Utilizing the Customization Workbench module, functions may be added to menu items for quick access without the need to go through a separate menu. Custom-written applications may be easily integrated as well. Global Menu items may be grouped or changed using the same structure as your Windows 2000 or XP Professional, while maintaining your current security structure.

Security

Flexible security options empower each site to establish security for any user role, making it easy to add new users and assign them to the appropriate security level. Users may also be assigned a role for multiple companies but restricted from others. These and other user-defined safeguards, such as customizable data entry templates, provide a high level of security for sensitive data.

Insightful Reports

Sage PFW leverages the robust reporting capabilities of Microsoft FRx to configure and produce financial reports such as the Balance Sheet and Income Statement. All other reports and forms are created with Crystal Reports. With over 350 pre-defined reports, most with multiple sorting and record selection options, this combination provides you with powerful, easy to customize tools for more insightful business reporting.

System Configuration

The recommended system configurations are as follows:

Network File Server

Network Operating Systems:
Red Hat Enterprise Linux ES Basic Edition (Kernel Version 2.4 or above)*, Windows 2000 Server, Windows 2003 Server, or Citrix Metaframe XP, using Terminal Services

Hardware:

- 1.8 GHz Pentium processor
- 1 GB or greater free hard disk space
- Monitor: VGA
- 1 GB RAM
- 32-bit NIC

* Certified with Sage PFW 5.3 and above

Citrix Metaframe XP with Feature Release 2 Server

Operating Systems:
Windows 2000 Server (SP4 or later with Terminal Services [Application Mode]), Windows 2003 Server Enterprise Edition (Application Mode)

Hardware:

- 1.8 GHz or more Pentium processor
- 1 GB RAM
- 256 MB RAM for each additional client session
- 5 GB or more free hard disk space
- 2 GB free hard disk space for each additional client session

Client Workstations and Process Application Server(s)

Operating Systems:
Windows 2000 Professional (SP4 or later) or Windows XP Professional (SP2), .NET Framework 2.0 (Installed by Sage PFW Client), Internet Explorer 6 (latest service pack)

Hardware:

- 1.8 GHz Pentium processor
- 1 GB or greater free hard disk space
- SVGA
- 512 MB RAM minimum
- 32-bit NIC

These requirements are valid for clients connected to a Citrix Metaframe XP Server.

Note: If you are using a PAS, it is not supported concurrently on a client machine or on the Sage PFW Server.

