



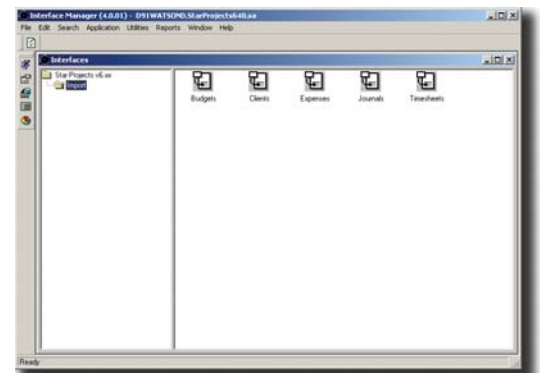
# InterfaceManager

## OVERVIEW

Interface Manager automates recurring or unique data exchange across non-integrated systems, and is designed for use on the industry standard Microsoft SQL platform. Interface Manager allows the user to configure an unlimited number of procedures that can be applied to data files of any text based format that are imported or exported. The product ships with numerous generic interfaces to [StarProjects](#), for example timesheet, budget and expense imports, that can be used 'off-the-shelf' or customized to suit specific requirements.

## BEYOND THE FUNDAMENTALS

Interface Manager's capabilities are extensive, allowing a dual-function Import/Export and a Utility or Live-link between the two data sources. The Import/Export function imports the data file and then performs the manipulation required for it to be stored in the applicable repository. The interface simultaneously exports the file back in a format compatible for the file's originator, or to another party, without the need for any manual intervention by the user. Building on this dual-function procedure, the Utility function allows this process to occur between two connected data sources automatically as required. Utility does not require the creation of file, rather, it runs the 'job' as the data flows from source to source.



Operating Interface Manager is simple, with user-friendly features such as:

- The ability to create and assign meaningful, customizable interface names
- Hierarchical/Tree-based storage and categorization of the procedures that can be defined by the user relative to business protocol
- File name masking that ensures that the file recipient will be able to import the file into their application
- Import directly from Excel formatted spreadsheet or Tab-delimited files into specified tables; showing progress throughout the import and providing a status report at the end of the import.

## ADVANCED DATA TRANSFORMATIONS

The true value of Interface Manager lies in the complexity of the data configuration routines that can be performed on the sent or received file, and the application's reporting capability. Interface Manager supports user-definition of data parameters such as dates, strings, numbers or non-numerical fields such as check-boxes and radio buttons. The user can define up to 7 parameters, where any or all of these parameters can be a range of values, for example Date From/To, or Project From/To. One of the key design features of this capability in Interface Manager, is that parameters are created in the user's setup options at the time of implementation and subsequently as new fields are required. By taking this design approach, upgrades of the application do not affect these settings, and accordingly make Interface Manager a cost effective solution.



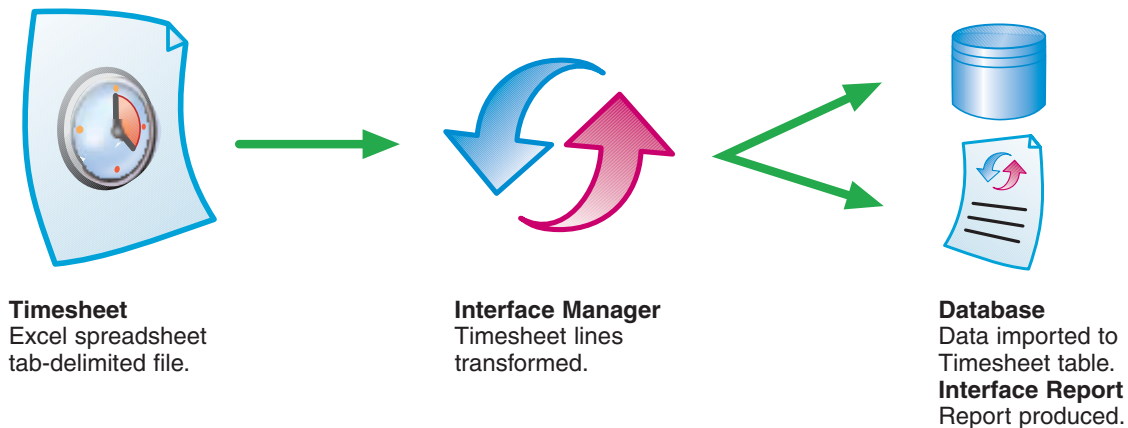
# InterfaceManager

Interface Manager also offers a useful Interface Report, where validation rules can be customized from default settings shipped with the application. The report produced can list Errors, Warnings, and general file Information (E/W/I). Users can define severity settings that are obeyed by Interface Manager and provide the basis for the E/W/I determination. Interface Reports can be printed, or exported to other applications such as Excel for further analysis and manipulation.

File Line	Description	Reference	Amount
166	Check Number 0040.000038 was exported	000302157246	0.00
167	Check Number 0040.000043 was exported	000302157246	0.00
<b>Total for Information</b>			<b>167</b>
			<b>53,469,866.88</b>

## EXAMPLES

### TIMESHEET IMPORT (Standard or custom based timesheet format)



### PAYROLL EXPORT (Custom format per payroll system requirements)

